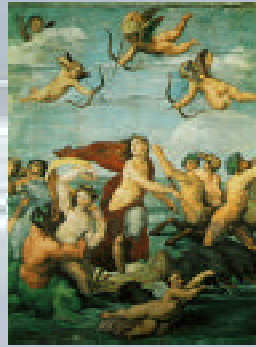


Sponsors

NASA
MIT
RISD
Doyle Sails
Anthrotronix, Inc.



Galatea Odyssey: World Contact

A Global Educational Project

Captain: Guillermo Trotti, is an architect with 25 years of teaching experience at the University of Houston and the Rhode Island School of Design, specializing in design for extreme environments. His projects include designs for the International Space Station galley and crew quarters, the South Pole Station, a lunar base, underwater laboratories and ecotourism resorts. He is a member of the Explorers Club and has explored every continent of the world.

First Mate and Education Director: Dava Newman is an Associate Professor of Aeronautics and Astronautics and MacVicar Faculty Fellow at MIT and an affiliate Harvard-MIT faculty in Health Science and Technology. She performs research in Aerospace Biomedical Engineering, flying experiments on board space stations and designing future Mars space suits. She teaches introductory aerospace engineering and design, senior design, as well as graduate space biomedical engineering and life support.

Contact Information:
28 Waldron Court
Marblehead, MA 01945
(781) 631-7750; (617) 791-6622
fax (617) 253-4196
E-mail: dnewman@mit.edu;
TROTTIG@aol.com

The Galatea Odyssey: World Contact is scheduled for November 2001 through June 2003 and is a circumnavigation starting from Marblehead, MA to the Caribbean through the Panama Canal across the Pacific Ocean through Northern Australia to the Indian Ocean to South Africa across the Atlantic Ocean to Brazil and back to Boston.

Teachers and students are invited to actively participate in any or all of the three educational themes:

- *Oral History Contact*
- *Science and Technology Contact*
- *Geography and Exploration Contact*

Contact will be made in person and through a living, evolving web site.

